



PICK-UP RAKES

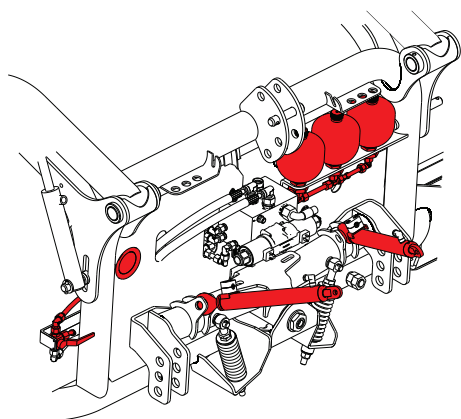
AIR

The SIP AIR series represents the cutting edge of swathing technology. The concept is based on the patented flexible pick-up and conveyor belt. The system provides high performance work and significantly reduces contamination.

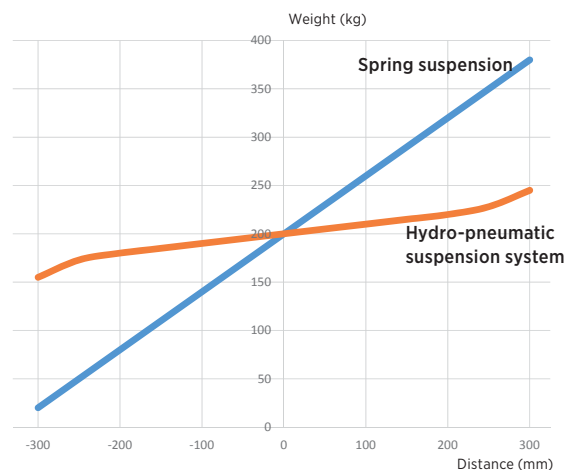
AIR TECHNOLOGIES

HYDRO-PNEUMATIC SUSPENSION

The hydro-pneumatic suspension system ensures even ground pressure, easy and hassle-free raking on all types of terrain and in all conditions. The relief rate can be easily and quickly adjusted before as well as during raking.



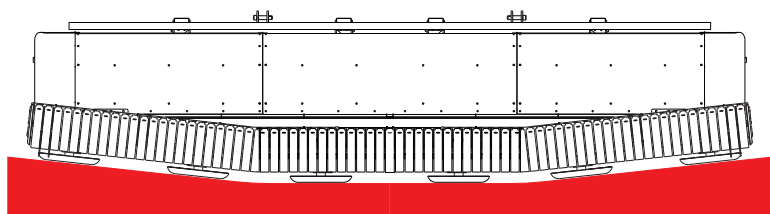
Hydro-pneumatic suspension system for front-mounted pick-up rake AIR F.



Comparison of weight distribution between the hydro-pneumatic suspension system (orange) and the spring suspension system (blue) at different vertical positions of the pick-up unit.

CAMLESS FLEXIBLE PICK-UP

The camless flexible pick-up enables better adaptation to the terrain and thus allows cleaner raking without ash content or other impurities. The trailed spring tines barely touch the ground for less wear and a longer lifetime.

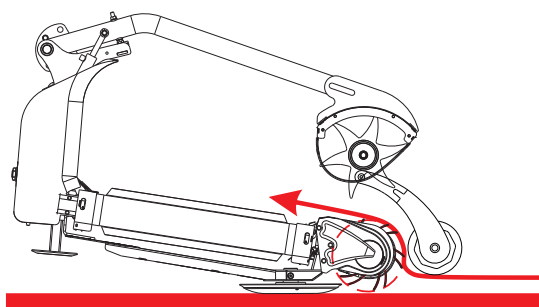


Instead of the straight line contact the flexible pick-up contacts the ground in a curved line for optimal ground hugging.



LESS LOSS OF LEAVES

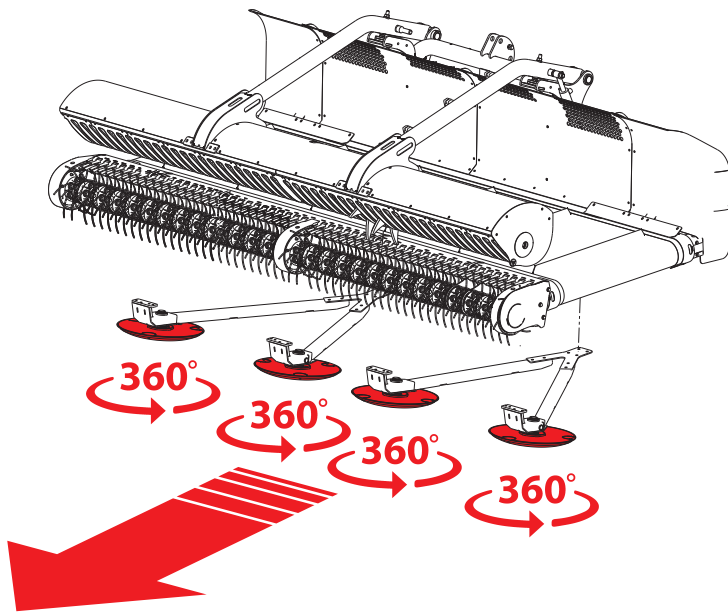
Smaller diameter of the pick-up and its slow rotation allow better forage flow with no turbulence. The result is less loss of leaves.



Slow rotation of the pick-up in combination with the finger rotor for perfect forage flow on the conveyor.

FREELY ROTATING SKIDS

While raking it is important to protect the turf. Because the skids are freely rotating, no dirt builds up on them. The rotating skids positioned close to the pick-up ensure high responsiveness to the terrain contour.

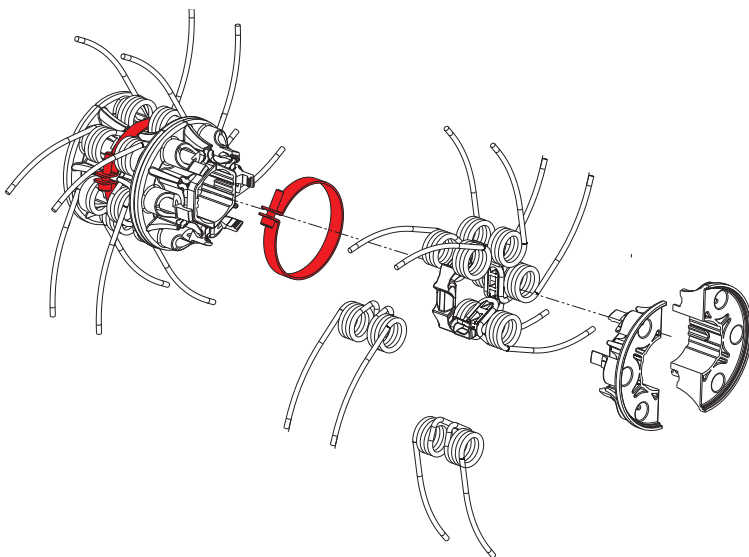


Freely rotating skids



The high responsiveness to the terrain contour ensures less wear on the pick-up as well as on the pick-up of the following harvester, baler or forage wagon.

UNIQUE SPRING TINE ANTI-LOSS SYSTEM



The number of elements of the anti-loss system is maximally reduced for quick and cheap maintenance.



The attachment of the spring tine anti-loss system consists of one screw with a clamp fastening six spring tines. The broken tine remains in the position.

PICK-UP RAKE

SIP AIR 300 F, 350 F, 300 F ALP

The front-mounted pick-up rakes AIR F deliver the crop to the side, thereby avoiding tractor wheels. It is a perfect solution for all types of grass, straw and crop residues.

Camless flexible pick-up

Swath roller

Hydro-pneumatic suspension

Finger rotor

Freely rotating skids



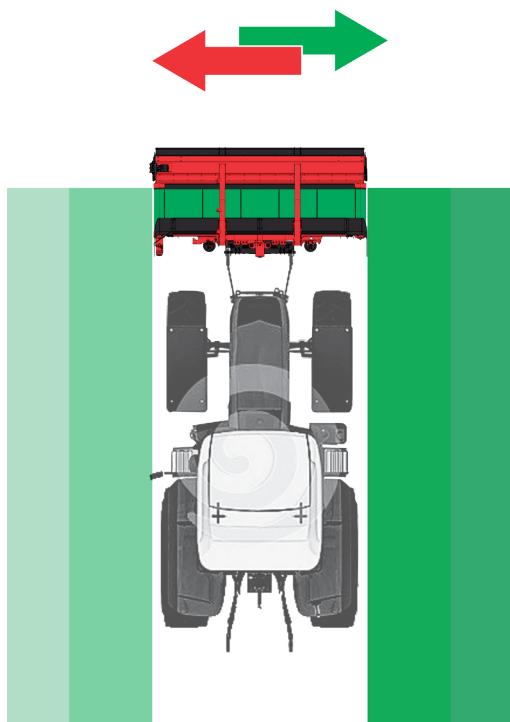
The robust linkage with a hydro-pneumatic suspension (Hydraulic float) offers excellent responsiveness to changes in terrain.



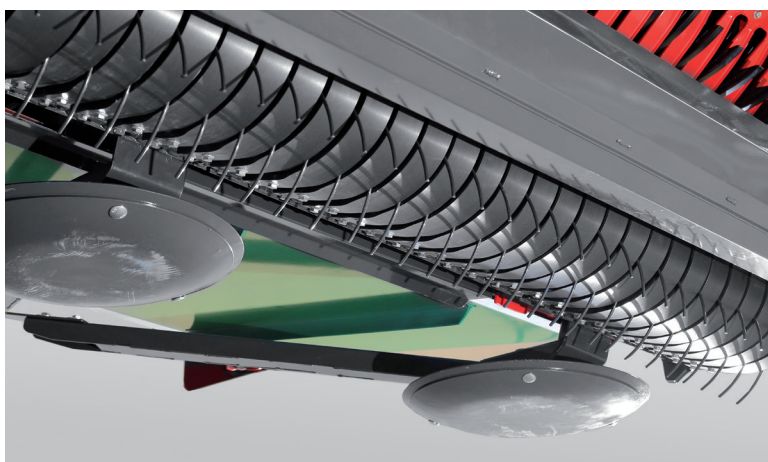
The direction and speed of the conveyor belt are simply carried out by a hydraulic motor.



The flexible pick-up and the finger rotor are driven by the tractor hydraulics.



Crop delivery to the left or to the right side of the rake.



Freely rotating skids are positioned very close to the pickup. The trailed spring tines barely touch the ground for less wear and a longer lifetime.

TECHNICAL DATA	AIR 300 F ALP	AIR 300 F	AIR 350 F
Working width - from - up to (m)	3,60 - 4,50	3,60 - 4,50	4,10 - 5,00
Conveyor belt width (m)	0,70	1,00	1,00
Swath width - min. - max. (m)	0,60 - 1,50	0,60 - 1,50	0,60 - 1,50
Rotor diameter (pick-up) (m)	0,33	0,33	0,33
Rotor diameter (Finger rotor) (m)	0,42	0,42	0,42
Pick-up width (m)	2,95	2,95	3,45
Weight (kg)	850	1080	1140
Required tractor power (kW/HP)	75/100	75/100	88/120
Required oil flow - up to (l/min)	60	60	60
Capacity (ha/h)	6,00*	6,00*	7,00*
Operating speed (km/h) - up to	20	20	20
Transport width (m)	3,00	3,00	3,50
Transport height (m)	1,20	1,20	1,20
Transport length (m)	1,60	1,90	1,90

* calculated at working speed of 20 km/h.

EQUIPMENT

Attachment	Front 3-point linkage Cat. II		
Hydraulic connection	1x one-way hydraulic connection (1EW) - flow, 1x two-way hydraulic connection (1DW)		
Swath curtain	+	+	+
Road safety equipment	S	S	S
Lighting equipment	+	+	+
Working lights	+	+	+



STANDARD EQUIPMENT



ADDITIONAL EQUIPMENT

PICK-UP RAKE

SIP AIR 500 T

JOINT DEVELOPMENT

SIP™ REITER
 INNOVATIVE TECHNOLOGY

The trailed pick-up rake AIR T is shifted to the side of the tractor's wheel track. It is a perfect solution for all types of grass, straw and crop residues.

Telescopic drawbar

Camless flexible pick-up

Swath roller

Hydro-pneumatic suspension

Finger rotor

Freely rotating skids



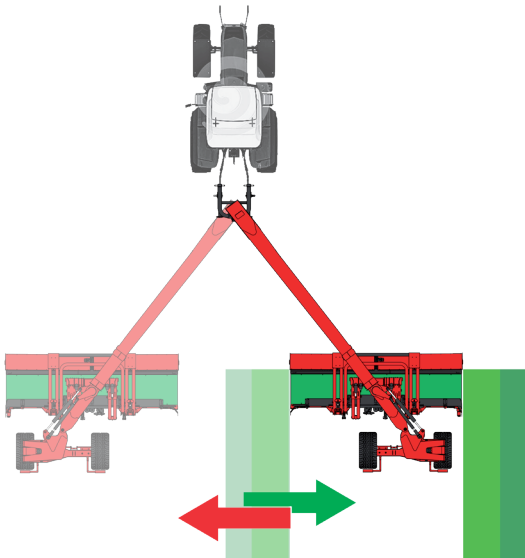
Transport frame with 2 -point pivoting linkage.



The direction and speed of the conveyor belt are simply carried out by a hydraulic motor.



The pick-up unit on the flexible frame with hydro-pneumatic suspension system ensures excellent responsiveness to the uneven terrain.



Working with the single trailed unit (left) or in combination with the front-mounted machine.



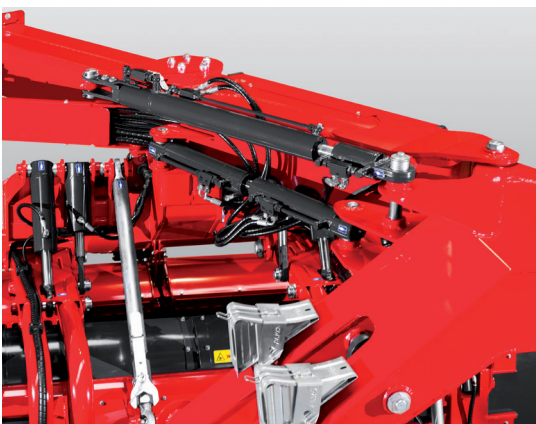
The swivelling frame hub and a telescope drawbar place the machine in a compact transport position.



The thought out design of the transport frame with the wheels positioned close to the pick-up unit.



The 5-metre flexible camless pick-up unit adapts perfectly to the uneven terrain through the overall width of the machine.



The hydraulic system on the transport chassis shifts the machine from the transport position to the work position – to the right or to the left side of the tractor. In addition, the 15° pick-up unit shift option enables smooth raking when dealing with unconditioned forage.

TECHNICAL DATA

AIR 500 T

Working width - form - up to (m)	5,60 - 6,50
Conveyor belt width (m)	1,00
Swath width - min. - max. (m)	0,60 - 1,50
Rotor diameter (pick-up) (m)	0,33
Rotor diameter (Finger rotor) (m)	0,42
Pick-up width (m)	3,45
Weight (kg)	4150
Required tractor power (kW/HP)	88/120
Required oil flow - up to (l/min)	60
Capacity (ha/h)	10,00*
Operating speed (km/h) - up to	20
Transport width (m)	2,50
Transport height (m)	2,45
Transport length (m)	6,35
Tyre size - transport frame	500/55 - 20; 560/45 - 22,5

* calculated at working speed of 20 km/h.

EQUIPMENT

Attachment	Transport frame with 2 -point linkage
Hydraulic connection	2x two-way hydraulic connection (1DW)
Swath curtain	+
Road safety equipment	S
Lighting equipment	S
Working lights	+



STANDARD EQUIPMENT



ADDITIONAL EQUIPMENT



Crop protection

The system ensures less leaf losses and clean crop without.



Curved tines

Trailed tines are curved for gentle pick-up of the forage leaving stones behind.



Flexible pick-up

The camless flexible pick-up enables better adaptation to the terrain.



Freely rotating skids

Freely rotating skids ensure ideal guidance of the pick-up tines over the ground.



Hydro-pneumatic suspension

Hydro-pneumatic suspension system ensures precise ground contour following.



Anti-loss System

Unique spring tine anti-loss system keeps the tine in case of breaking in position.



Dealer contact: